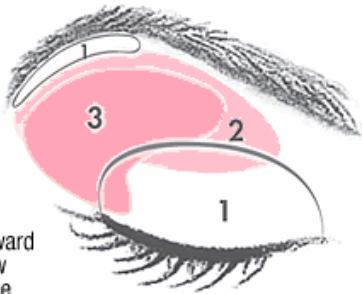


Great Tips for Gorgeous Eyes!

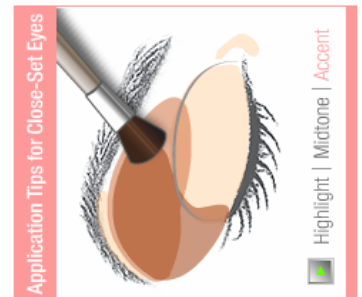
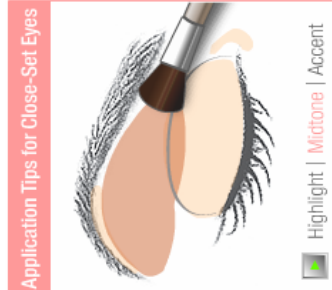
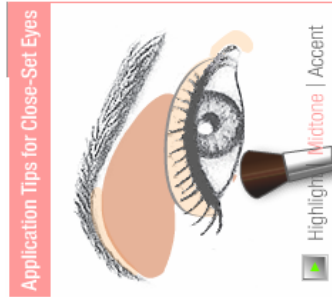
Close-Set Eyes

Eyes that are less than one eye width apart.

- 1 First, apply the highlighter shade to the browbone and lid. Also apply the highlighter shade to the inside corners of the eye to help the eyes appear farther apart.
- 2 Next, starting at the outer corner of the crease, bring the midtone shade toward the inside corner to the brow but not all the way over to the nose. Use the midtone shade to bridge the highlighter and accent shades along the lower lashline.
- 3 To finish, sweep the accent shade across the base of the upper lashline and up into the outer area of the crease. Sweep the accent shade underneath the lower lashline for definition. Stop the color before you get to the inside corners.



MARY KAY®



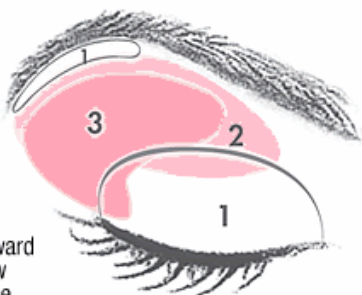
Created by Sr. Director Kellie Hammett

Great Tips for Gorgeous Eyes!

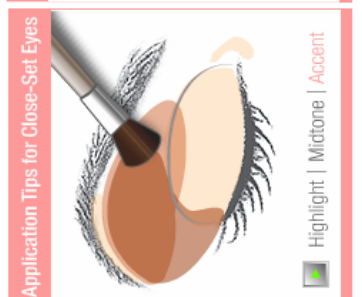
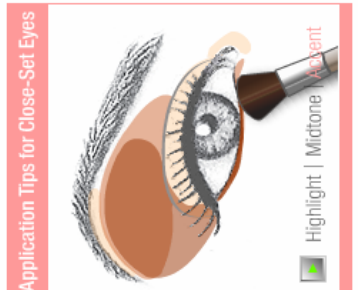
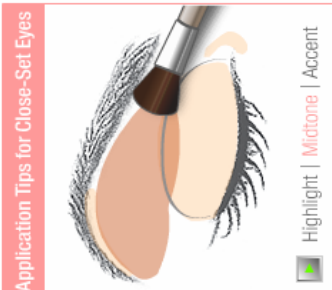
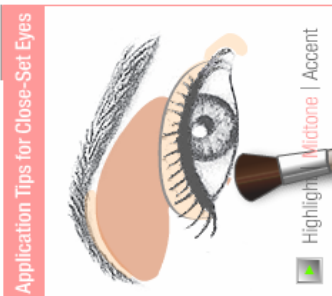
Close-Set Eyes

Eyes that are less than one eye width apart.

- 1 First, apply the highlighter shade to the browbone and lid. Also apply the highlighter shade to the inside corners of the eye to help the eyes appear farther apart.
- 2 Next, starting at the outer corner of the crease, bring the midtone shade toward the inside corner to the brow but not all the way over to the nose. Use the midtone shade to bridge the highlighter and accent shades along the lower lashline.
- 3 To finish, sweep the accent shade across the base of the upper lashline and up into the outer area of the crease. Sweep the accent shade underneath the lower lashline for definition. Stop the color before you get to the inside corners.



MARY KAY®



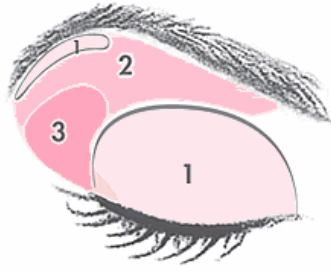
Created by Sr. Director Kellie Hammett

Great Tips for Gorgeous Eyes!

Deep-Set Eyes

Eyes that are set deep, making the browbone appear more noticeable.

- 1 First, apply the highlighter shade to the eyelid and along the inner corner of the lower lashes and to browbone.
- 2 Next, apply the midtone shade up above the crease and sweep it across the browbone.
- 3 To finish, apply the accent shade to the outer corner of the upper lashline, then up onto the corner of the browbone. Sweep the accent shade underneath the lower lashline for definition.



MARY KAY®

Application Tips for Deep-Set Eyes



Highlight | Midtone | Accent

Application Tips for Deep-Set Eyes



Highlight | Midtone | Accent

Application Tips for Deep-Set Eyes



Highlight | Midtone | Accent

Application Tips for Deep-Set Eyes



Highlight | Midtone | Accent

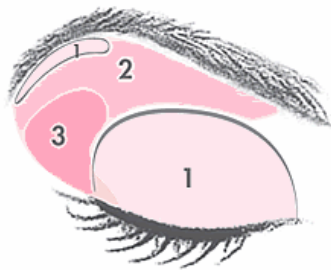
Created by Sr. Director Kellie Hammett

Great Tips for Gorgeous Eyes!

Deep-Set Eyes

Eyes that are set deep, making the browbone appear more noticeable.

- 1 First, apply the highlighter shade to the eyelid and along the inner corner of the lower lashes and to browbone.
- 2 Next, apply the midtone shade up above the crease and sweep it across the browbone.
- 3 To finish, apply the accent shade to the outer corner of the upper lashline, then up onto the corner of the browbone. Sweep the accent shade underneath the lower lashline for definition.



MARY KAY®

Application Tips for Deep-Set Eyes



Highlight | Midtone | Accent

Application Tips for Deep-Set Eyes



Highlight | Midtone | Accent

Application Tips for Deep-Set Eyes



Highlight | Midtone | Accent

Application Tips for Deep-Set Eyes



Highlight | Midtone | Accent

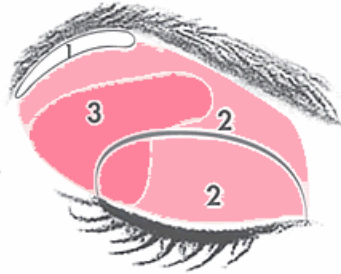
Created by Sr. Director Kellie Hammett

Great Tips for Gorgeous Eyes!

Wide-Set Eyes

Eyes that are more than one eye width apart.

- 1 First, apply the highlighter shade to the browbone.
- 2 Next, starting from the outer corner of the crease, bring the midtone toward the inside corner of the eye. Deepen the midtone color on the inside corners and lid to help the eyes appear closer together.
- 3 To finish, starting slightly in from the outer corner, brush the accent shade across the upper lashline and into the crease of the eye. Also sweep it underneath the lower lashline, being careful not to extend it beyond the outer edge of the eye.



MARY KAY®

Application Tips for Wide-Set Eyes



Application Tips for Wide-Set Eyes



Application Tips for Wide-Set Eyes



Application Tips for Wide-Set Eyes



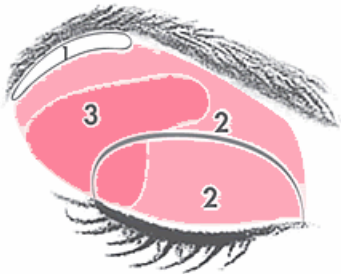
Created by Sr. Director Kellie Hammett

Great Tips for Gorgeous Eyes!

Wide-Set Eyes

Eyes that are more than one eye width apart.

- 1 First, apply the highlighter shade to the browbone.
- 2 Next, starting from the outer corner of the crease, bring the midtone toward the inside corner of the eye. Deepen the midtone color on the inside corners and lid to help the eyes appear closer together.
- 3 To finish, starting slightly in from the outer corner, brush the accent shade across the upper lashline and into the crease of the eye. Also sweep it underneath the lower lashline, being careful not to extend it beyond the outer edge of the eye.



MARY KAY®

Application Tips for Wide-Set Eyes



Application Tips for Wide-Set Eyes



Application Tips for Wide-Set Eyes



Application Tips for Wide-Set Eyes



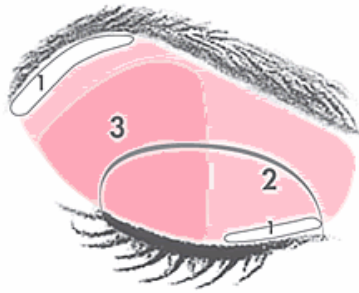
Created by Sr. Director Kellie Hammett

Great Tips for Gorgeous Eyes!

Hooded Eyes

Eyes that are set so that the natural crease in the eyelid is not readily seen.

- 1 First, apply the highlighter shade to the browbone and along the upper lashline and to the inner corner of the lower lashes.
- 2 Next, apply the midtone shade from the base of the upper lashline and over the entire hooded area to help the lid appear to recede. Then blend.
- 3 To finish, apply the accent shade from the base of the lashline and over the entire hooded area to help it appear to recede and blend. Sweep the accent color underneath the lower lashes to define. Hooded eyes really benefit from a well-defined upper and lower lashline.



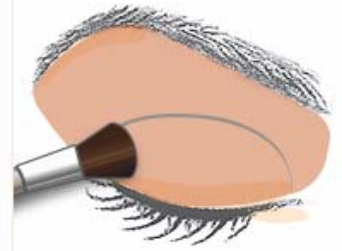
MARY KAY®

Application Tips for Hooded Eyes



Highlight | Midtone | Accent

Application Tips for Hooded Eyes



Highlight | Midtone | Accent

Application Tips for Hooded Eyes



Highlight | Midtone | Accent

Application Tips for Hooded Eyes



Highlight | Midtone | Accent

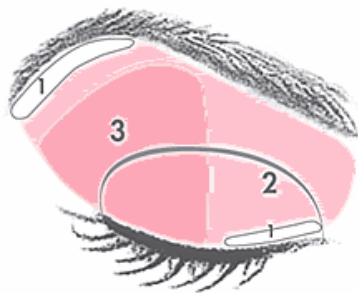
Created by Sr. Director Kellie Hammett

Great Tips for Gorgeous Eyes!

Hooded Eyes

Eyes that are set so that the natural crease in the eyelid is not readily seen.

- 1 First, apply the highlighter shade to the browbone and along the upper lashline and to the inner corner of the lower lashes.
- 2 Next, apply the midtone shade from the base of the upper lashline and over the entire hooded area to help the lid appear to recede. Then blend.
- 3 To finish, apply the accent shade from the base of the lashline and over the entire hooded area to help it appear to recede and blend. Sweep the accent color underneath the lower lashes to define. Hooded eyes really benefit from a well-defined upper and lower lashline.



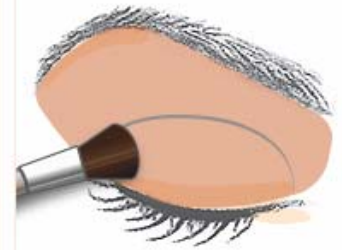
MARY KAY®

Application Tips for Hooded Eyes



Highlight | Midtone | Accent

Application Tips for Hooded Eyes



Highlight | Midtone | Accent

Application Tips for Hooded Eyes



Highlight | Midtone | Accent

Application Tips for Hooded Eyes



Highlight | Midtone | Accent

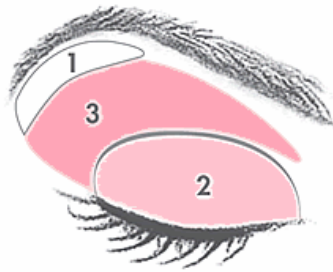
Created by Sr. Director Kellie Hammett

Great Tips for Gorgeous Eyes!

Standard Eyes

Eyes that are about one eye width apart.

- 1 First, apply the highlighter shade under the browbone.
- 2 Next, apply the midtone shade over the entire eyelid.
- 3 To finish, apply the accent shade in the crease of the eye.



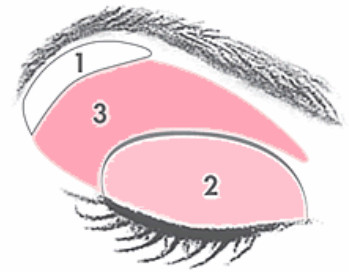
MARY KAY®

Great Tips for Gorgeous Eyes!

Standard Eyes

Eyes that are about one eye width apart.

- 1 First, apply the highlighter shade under the browbone.
- 2 Next, apply the midtone shade over the entire eyelid.
- 3 To finish, apply the accent shade in the crease of the eye.



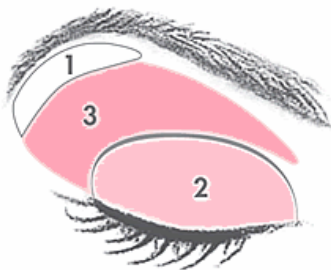
MARY KAY®

Great Tips for Gorgeous Eyes!

Standard Eyes

Eyes that are about one eye width apart.

- 1 First, apply the highlighter shade under the browbone.
- 2 Next, apply the midtone shade over the entire eyelid.
- 3 To finish, apply the accent shade in the crease of the eye.



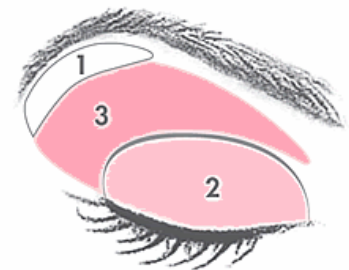
MARY KAY®

Great Tips for Gorgeous Eyes!

Standard Eyes

Eyes that are about one eye width apart.

- 1 First, apply the highlighter shade under the browbone.
- 2 Next, apply the midtone shade over the entire eyelid.
- 3 To finish, apply the accent shade in the crease of the eye.



MARY KAY®

Great Tips for Gorgeous Lips!

Full Lips

To get the best look for your full lips, follow these simple steps to a gorgeous you.

- 1 First, apply TimeWise® Age-Fighting Lip Primer on lips, inside and outside your lip line, to extend lipstick wear and help prevent lipstick and lip gloss from feathering and bleeding. Allow to dry prior to applying any other lip products.
- 2 Next, to help increase lipstick wear, create a matte base by lining lips with lip liner along the natural lip line and filling in lips with lip liner pencil.
- 3 Next, apply MK Signature™ Creme Lipstick to the top lip, working from the center out. Then apply to the bottom lip, sweeping color from corner to corner.
- 4 Finish with a coordinating color of MK Signature™ Lip Gloss by applying gloss to the center of the top and bottom lips.

And here's a tip when it comes to picking the perfect MK Signature™ Lipstick shade. Remember that lighter colors illuminate and help make lips appear fuller. Bright, warm colors tend to make lips look more youthful while darker colors can cause lips to appear smaller.



MARY KAY®

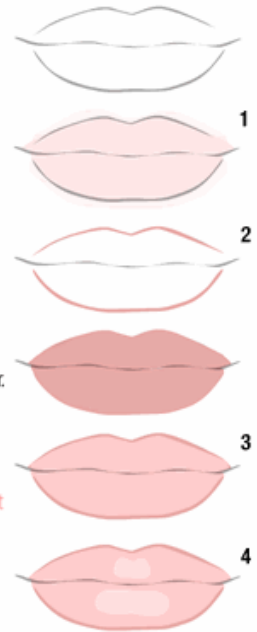
Great Tips for Gorgeous Lips!

Full Lips

To get the best look for your full lips, follow these simple steps to a gorgeous you.

- 1 First, apply TimeWise® Age-Fighting Lip Primer on lips, inside and outside your lip line, to extend lipstick wear and help prevent lipstick and lip gloss from feathering and bleeding. Allow to dry prior to applying any other lip products.
- 2 Next, to help increase lipstick wear, create a matte base by lining lips with lip liner along the natural lip line and filling in lips with lip liner pencil.
- 3 Next, apply MK Signature™ Creme Lipstick to the top lip, working from the center out. Then apply to the bottom lip, sweeping color from corner to corner.
- 4 Finish with a coordinating color of MK Signature™ Lip Gloss by applying gloss to the center of the top and bottom lips.

And here's a tip when it comes to picking the perfect MK Signature™ Lipstick shade. Remember that lighter colors illuminate and help make lips appear fuller. Bright, warm colors tend to make lips look more youthful while darker colors can cause lips to appear smaller.



MARY KAY®

Great Tips for Gorgeous Lips!

Full Lips

To get the best look for your full lips, follow these simple steps to a gorgeous you.

- 1 First, apply TimeWise® Age-Fighting Lip Primer on lips, inside and outside your lip line, to extend lipstick wear and help prevent lipstick and lip gloss from feathering and bleeding. Allow to dry prior to applying any other lip products.
- 2 Next, to help increase lipstick wear, create a matte base by lining lips with lip liner along the natural lip line and filling in lips with lip liner pencil.
- 3 Next, apply MK Signature™ Creme Lipstick to the top lip, working from the center out. Then apply to the bottom lip, sweeping color from corner to corner.
- 4 Finish with a coordinating color of MK Signature™ Lip Gloss by applying gloss to the center of the top and bottom lips.

And here's a tip when it comes to picking the perfect MK Signature™ Lipstick shade. Remember that lighter colors illuminate and help make lips appear fuller. Bright, warm colors tend to make lips look more youthful while darker colors can cause lips to appear smaller.



MARY KAY®

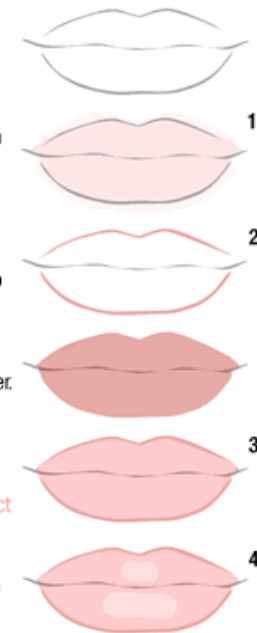
Great Tips for Gorgeous Lips!

Full Lips

To get the best look for your full lips, follow these simple steps to a gorgeous you.

- 1 First, apply TimeWise® Age-Fighting Lip Primer on lips, inside and outside your lip line, to extend lipstick wear and help prevent lipstick and lip gloss from feathering and bleeding. Allow to dry prior to applying any other lip products.
- 2 Next, to help increase lipstick wear, create a matte base by lining lips with lip liner along the natural lip line and filling in lips with lip liner pencil.
- 3 Next, apply MK Signature™ Creme Lipstick to the top lip, working from the center out. Then apply to the bottom lip, sweeping color from corner to corner.
- 4 Finish with a coordinating color of MK Signature™ Lip Gloss by applying gloss to the center of the top and bottom lips.

And here's a tip when it comes to picking the perfect MK Signature™ Lipstick shade. Remember that lighter colors illuminate and help make lips appear fuller. Bright, warm colors tend to make lips look more youthful while darker colors can cause lips to appear smaller.



MARY KAY®

Great Tips for Gorgeous Lips!

Medium Lips

To get the best look for your medium lips, follow these simple steps to a gorgeous you.

- 1 First, apply TimeWise® Age-Fighting Lip Primer on lips, inside and outside your lip line, to extend lipstick wear and help prevent lipstick and lip gloss from feathering and bleeding. Allow to dry prior to applying any other lip products.
- 2 Next, to help increase lipstick wear, create a matte base by lining lips with lip liner along the natural lip line and filling in lips with lip liner pencil.
- 3 Next, apply MK Signature™ Creme Lipstick to the top lip, working from the center out. Then apply to the bottom lip, sweeping color from corner to corner.
- 4 For the finishing touch, choose a coordinating MK Signature™ Lip Gloss. Apply lip gloss to the center of the top and bottom lips to make your lips appear fuller.

And here's a tip when it comes to picking the perfect MK Signature™ Lipstick shade. Remember that lighter colors illuminate and help make lips appear fuller. Bright, warm colors tend to make lips look more youthful while darker colors can cause lips to appear smaller.



MARY KAY®

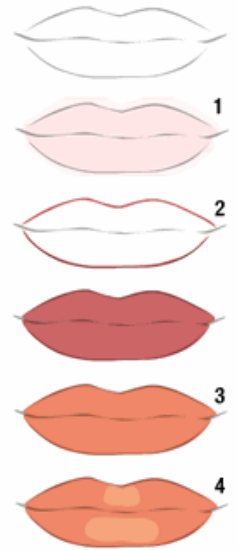
Great Tips for Gorgeous Lips!

Medium Lips

To get the best look for your medium lips, follow these simple steps to a gorgeous you.

- 1 First, apply TimeWise® Age-Fighting Lip Primer on lips, inside and outside your lip line, to extend lipstick wear and help prevent lipstick and lip gloss from feathering and bleeding. Allow to dry prior to applying any other lip products.
- 2 Next, to help increase lipstick wear, create a matte base by lining lips with lip liner along the natural lip line and filling in lips with lip liner pencil.
- 3 Next, apply MK Signature™ Creme Lipstick to the top lip, working from the center out. Then apply to the bottom lip, sweeping color from corner to corner.
- 4 For the finishing touch, choose a coordinating MK Signature™ Lip Gloss. Apply lip gloss to the center of the top and bottom lips to make your lips appear fuller.

And here's a tip when it comes to picking the perfect MK Signature™ Lipstick shade. Remember that lighter colors illuminate and help make lips appear fuller. Bright, warm colors tend to make lips look more youthful while darker colors can cause lips to appear smaller.



MARY KAY®

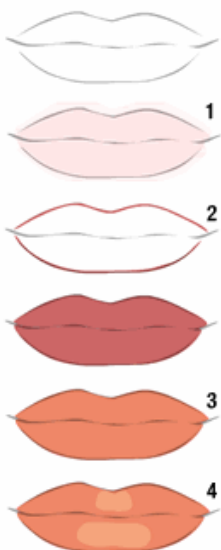
Great Tips for Gorgeous Lips!

Medium Lips

To get the best look for your medium lips, follow these simple steps to a gorgeous you.

- 1 First, apply TimeWise® Age-Fighting Lip Primer on lips, inside and outside your lip line, to extend lipstick wear and help prevent lipstick and lip gloss from feathering and bleeding. Allow to dry prior to applying any other lip products.
- 2 Next, to help increase lipstick wear, create a matte base by lining lips with lip liner along the natural lip line and filling in lips with lip liner pencil.
- 3 Next, apply MK Signature™ Creme Lipstick to the top lip, working from the center out. Then apply to the bottom lip, sweeping color from corner to corner.
- 4 For the finishing touch, choose a coordinating MK Signature™ Lip Gloss. Apply lip gloss to the center of the top and bottom lips to make your lips appear fuller.

And here's a tip when it comes to picking the perfect MK Signature™ Lipstick shade. Remember that lighter colors illuminate and help make lips appear fuller. Bright, warm colors tend to make lips look more youthful while darker colors can cause lips to appear smaller.



MARY KAY®

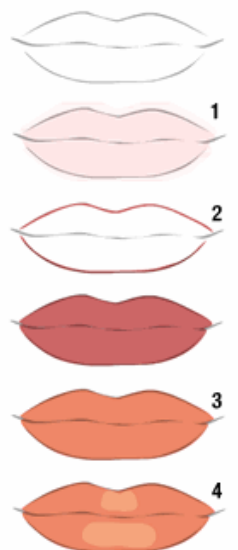
Great Tips for Gorgeous Lips!

Medium Lips

To get the best look for your medium lips, follow these simple steps to a gorgeous you.

- 1 First, apply TimeWise® Age-Fighting Lip Primer on lips, inside and outside your lip line, to extend lipstick wear and help prevent lipstick and lip gloss from feathering and bleeding. Allow to dry prior to applying any other lip products.
- 2 Next, to help increase lipstick wear, create a matte base by lining lips with lip liner along the natural lip line and filling in lips with lip liner pencil.
- 3 Next, apply MK Signature™ Creme Lipstick to the top lip, working from the center out. Then apply to the bottom lip, sweeping color from corner to corner.
- 4 For the finishing touch, choose a coordinating MK Signature™ Lip Gloss. Apply lip gloss to the center of the top and bottom lips to make your lips appear fuller.

And here's a tip when it comes to picking the perfect MK Signature™ Lipstick shade. Remember that lighter colors illuminate and help make lips appear fuller. Bright, warm colors tend to make lips look more youthful while darker colors can cause lips to appear smaller.



MARY KAY®

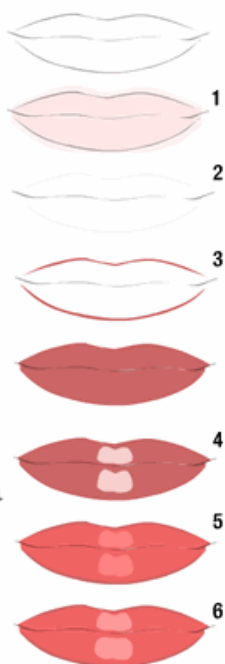
Great Tips for Gorgeous Lips!

Thin Lips

To get the best look for your thin lips, follow these simple steps to a gorgeous you.

- 1 First, apply TimeWise® Age-Fighting Lip Primer on lips, inside and outside your lip line, to extend lipstick wear and help prevent lipstick and lip gloss from feathering and bleeding. Allow to dry prior to applying any other lip products.
- 2 Next, to erase the existing lip line, apply concealer or foundation to the lips.
- 3 Next, use MK Signature™ Lip Liner to draw a line slightly above the natural top lip and around the bottom lip lines. Fill in lips completely with lip liner to create a matte base that helps increase lipstick wear.
- 4 Then dab a small amount of concealer to the center of the top and bottom lips.
- 5 Next, apply MK Signature™ Creme Lipstick to the top lip, working from the center out. Then apply to the bottom lip, sweeping color from corner to corner.
- 6 Finish with a coordinating color of MK Signature™ Lip Gloss. Apply lip gloss to the center of the top and bottom lips to help make lips appear fuller.

And here's a tip when it comes to picking the perfect MK Signature™ Creme Lipstick shade. Remember that lighter colors illuminate and help make lips appear fuller. Bright, warm colors tend to make lips look more youthful while darker colors can cause lips to appear smaller.



MARY KAY®

Great Tips for Gorgeous Lips!

Thin Lips

To get the best look for your thin lips, follow these simple steps to a gorgeous you.

- 1 First, apply TimeWise® Age-Fighting Lip Primer on lips, inside and outside your lip line, to extend lipstick wear and help prevent lipstick and lip gloss from feathering and bleeding. Allow to dry prior to applying any other lip products.
- 2 Next, to erase the existing lip line, apply concealer or foundation to the lips.
- 3 Next, use MK Signature™ Lip Liner to draw a line slightly above the natural top lip and around the bottom lip lines. Fill in lips completely with lip liner to create a matte base that helps increase lipstick wear.
- 4 Then dab a small amount of concealer to the center of the top and bottom lips.
- 5 Next, apply MK Signature™ Creme Lipstick to the top lip, working from the center out. Then apply to the bottom lip, sweeping color from corner to corner.
- 6 Finish with a coordinating color of MK Signature™ Lip Gloss. Apply lip gloss to the center of the top and bottom lips to help make lips appear fuller.

And here's a tip when it comes to picking the perfect MK Signature™ Creme Lipstick shade. Remember that lighter colors illuminate and help make lips appear fuller. Bright, warm colors tend to make lips look more youthful while darker colors can cause lips to appear smaller.



MARY KAY®

Great Tips for Gorgeous Lips!

Thin Lips

To get the best look for your thin lips, follow these simple steps to a gorgeous you.

- 1 First, apply TimeWise® Age-Fighting Lip Primer on lips, inside and outside your lip line, to extend lipstick wear and help prevent lipstick and lip gloss from feathering and bleeding. Allow to dry prior to applying any other lip products.
- 2 Next, to erase the existing lip line, apply concealer or foundation to the lips.
- 3 Next, use MK Signature™ Lip Liner to draw a line slightly above the natural top lip and around the bottom lip lines. Fill in lips completely with lip liner to create a matte base that helps increase lipstick wear.
- 4 Then dab a small amount of concealer to the center of the top and bottom lips.
- 5 Next, apply MK Signature™ Creme Lipstick to the top lip, working from the center out. Then apply to the bottom lip, sweeping color from corner to corner.
- 6 Finish with a coordinating color of MK Signature™ Lip Gloss. Apply lip gloss to the center of the top and bottom lips to help make lips appear fuller.

And here's a tip when it comes to picking the perfect MK Signature™ Creme Lipstick shade. Remember that lighter colors illuminate and help make lips appear fuller. Bright, warm colors tend to make lips look more youthful while darker colors can cause lips to appear smaller.



MARY KAY®

Great Tips for Gorgeous Lips!

Thin Lips

To get the best look for your thin lips, follow these simple steps to a gorgeous you.

- 1 First, apply TimeWise® Age-Fighting Lip Primer on lips, inside and outside your lip line, to extend lipstick wear and help prevent lipstick and lip gloss from feathering and bleeding. Allow to dry prior to applying any other lip products.
- 2 Next, to erase the existing lip line, apply concealer or foundation to the lips.
- 3 Next, use MK Signature™ Lip Liner to draw a line slightly above the natural top lip and around the bottom lip lines. Fill in lips completely with lip liner to create a matte base that helps increase lipstick wear.
- 4 Then dab a small amount of concealer to the center of the top and bottom lips.
- 5 Next, apply MK Signature™ Creme Lipstick to the top lip, working from the center out. Then apply to the bottom lip, sweeping color from corner to corner.
- 6 Finish with a coordinating color of MK Signature™ Lip Gloss. Apply lip gloss to the center of the top and bottom lips to help make lips appear fuller.

And here's a tip when it comes to picking the perfect MK Signature™ Creme Lipstick shade. Remember that lighter colors illuminate and help make lips appear fuller. Bright, warm colors tend to make lips look more youthful while darker colors can cause lips to appear smaller.



MARY KAY®